

EVOKE ART STUDIO

FINE ART CREATED TO EVOKE POSITIVITY.



POSITIVE ART CREATES HAPPIER CLIENTS.

**OUR MISSION IS TO INSPIRE PEOPLE TO SEEK
EVERYTHING THEY WANT IN LIFE, ART PROVIDES US
WITH A DEEPER UNDERSTANDING OF OUR OWN
EMOTIONS AND SELF-AWARENESS.**

Hudson@EvokeArtStudio.com | 858.231.6455 | www.EvokeArtStudio.com

Art Methods

Encaustic

Sculptured Patina

Mixed Media

"I want people to have a need to touch the art, as if it is speaking to them directly. So much of what is out there doesn't feel good and as much as there is bad in the world, we should all seek happiness and success. It is up to us to push and celebrate as much as we can. I want my art to inspire people to seek everything they want in life—I say, don't stand in the way of the light."

- Laura Anderson (Artist)

Encaustic

Encaustic – (Beeswax. Derma Resin. Pigment) This medium dates back to the Egyptian mummy portraits and in Greek means “to burn in”. It is composed of natural fragrant beeswax, and derma resin (also known as Malaysia tree sap). To create the art, I have to paint in layers, and after each layer I fuse it with a blowtorch until I receive the desired effect. I have as many as fifty layers to a single piece and in some cases, I will set parts of the encaustic on fire with shellac. After the layers are complete, I will buffer the encaustic with a non-lint, soft cloth it will reveal the saturated colors. In the end, it has a beautiful luster, strong pigment and looks as if it could be oil paint that is kept molten.

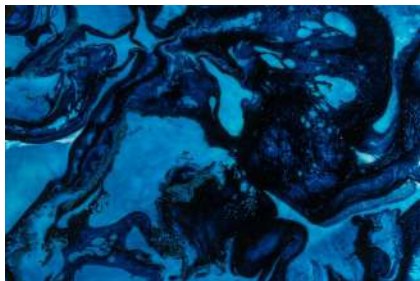


"Movement"
Prints Available

0.1



"Drift"
Prints Available
0.2



"Beneath"
Prints Available
0.3



"Above Ocean"
Prints Available
0.4





"Perspective"
Prints Available
0.5



"Looking Through"
Prints Available
0.6

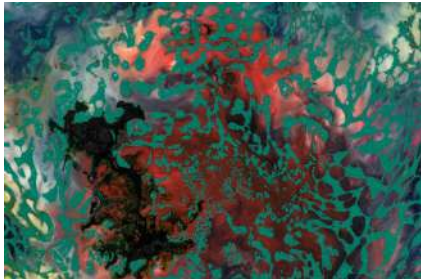


"Zen Within"
Prints Available
0.7





"Nebula"
Prints Available
0.8



"Sand Bar"
Prints Available
0.9



"Two Worlds"
Prints Available
1.0





"Awakening"
Original & Prints Available
Dimensions: 24" X 24"
Weight: 6lbs
1.1



"Love Note"
Prints Available
1.2



"Secret Flower"
Prints Available
1.3





"Dry"
Prints Available
1.4



"Wandering"
Prints Available
1.5



"Journey"
Original & Prints Available
Dimensions: 24" X 24"
Weight: 6lbs
1.6





"Romance"
Prints Available
1.7



"Luck"
Prints Available
1.8

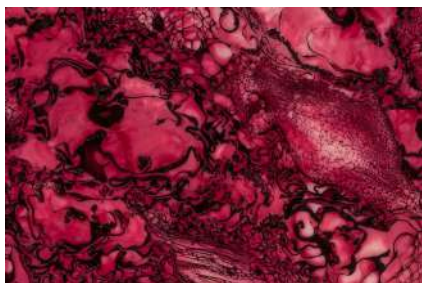


"Shine"
Original & Prints Available
Dimensions: 36" X 36"
Weight: 11.2lbs
1.9





"Charm"
Prints Available
2.0



"Aroma"
Prints Available
2.1



Have your own style and color in mind?
Reach out to us! We are happy to commission an art piece for you.

Mixed Media

In any given art piece, I use one to four mediums, including: sculptured patina, encaustic, marble dust and limestone.



"Luna"

Original & Prints Available

Dimensions 48" X 60"

Weight: Unknown

2.3



"Silver Moon"
Prints Available
2.4



"Ammonite"
Prints Available
2.5



"Energy"
Original & Prints Available
Dimensions: 16" X 40"
Weight: Unknown
2.6





"David"
Original & Prints Available
Dimensions: 41" X 16"
weight: 12.2lbs
2.7



Have your own style and color in mind?
Reach out to us! We are happy to commission an art piece for you.

Sculptured Patina

Once sculpting and carving are complete Laura applies up to eight layers of liquid metal that are mixed with a hardener and catalyst. She could wait 5 to 100 years to let a patina naturally occur or bury my piece in the ground but with magical chemicals she creates a controlled patina. Laura can also stop the patina once she achieves the desired effect. This process alone can take as little as a few hours or as much as a few days or even weeks to achieve. It is a wonderful process because as much as she can control the amount of patina added to any given piece, it still has a life of its own, thus making each piece unique. It is magical!



"Evoke"

Original & Prints Available

Dimensions: 30" X 40"

Weight: Unknown

2.8



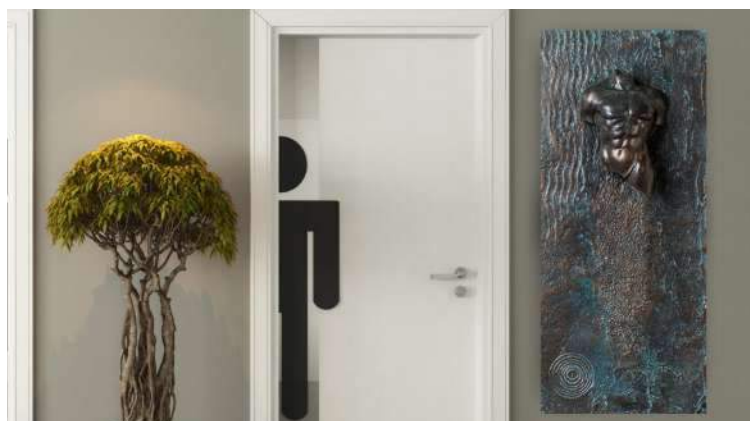
"Guardian"
Prints Available
2.9



"Soul of Woman"
Prints Available
3.0



"Soul of Man"
Prints Available
3.1





"Essence of Woman"
Original & Prints Available
Dimensions: 28" X 12"
Weight: 9lbs
3.2



"Essence of Man"
Original & Prints Available
Dimensions: 28" X 12"
Weight: 10lbs
3.3



"Emotion"
Original & Prints Available
Dimensions: 12" X 12"
Weight: 4.4lbs
3.4





"Lily"

Original & Prints Available

Dimensions: 48" X 48"

weight: Unknown

3.5



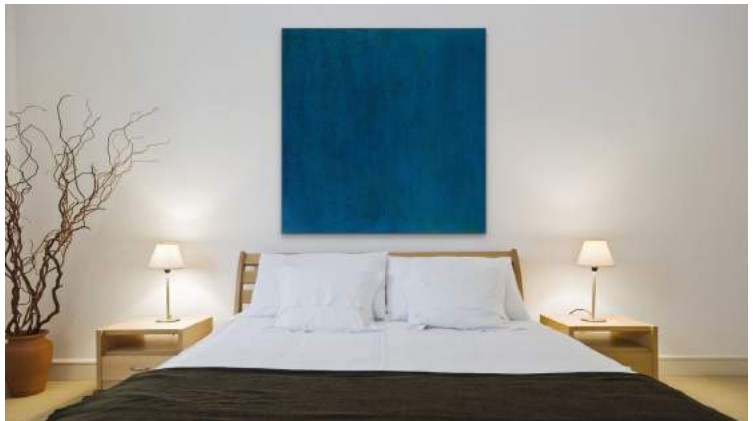
"Breathe"

Original & Prints Available

Dimensions: 48" X 48"

Weight: Unknown

3.6



"Clarity"

Original & Prints Available

Dimensions: Unknown

Weight: Unknown:

4.2



Have your own style and color in mind?

Reach out to us! We are happy to commission an art piece for you.



"Coming Soon"

Original & Prints Available

Dimensions: 48" X 48"

weight: Unknown

3.5



Have your own style and color in mind?

Reach out to us! We are happy to commission an art piece for you.

Intention Circle

*Sculptured Patina Special Collection

It started as a dream that evoked an emotion of depth and meaning; it was clear that I needed to create it. The “it” being what I now call an Intention Circle. The circle is meant to mirror and evoke emotions for the onlooker that is essential to understanding oneself. Its intention is to bring positive energy and reunite your physical being to your spiritual one through the conscious and subconscious. It is an intention circle and is meant to be infinite in its depth of emotion and perception.

It is your circle, your path, and your life's intention. It pushes for self honesty and helps to visualize how far you may have strayed from your unrealized dreams. It will give you balance and strength to find what is missing and thus, will help to restore your joys in life through self-understanding.

Each circular layer represents something different and meaningful to the inner you.

- **Smallest Circle** – Self/Soul. This is you, yourself and your soul. This represents who you are and who you’ve become in your life and your families lives.
- **Medium Circle** – Gratitude. Gratitude, gratitude. This represents thankfulness for life and all that is good; it is positivity.
- **Largest Circle** – Intention. Intention. This is all the good that we want to intend for ourselves our family, and the world. This is where you order from the infinite universe anything that you would like; joy, happiness, success, relationships, world piece, health, house, car, it is your intention and your permission to dream.



"Rust Intention Circle"
Original & Prints Available
Dimensions: 35"
Weight: 38.2lbs
3.8



"Patina Intention Circle"
Original & Prints Available
Dimensions: 35"
Weight: 37.2lbs
3.9



"Silver Intention Circle"
Original & Prints Available
Dimensions: 24"
Weight: 16lbs
4.0





"Bronze Intention Circle"
Original & Prints Available
Dimensions: 24"
Weight: 17.4lbs
4.1



Works in progress

Evoke Art Studio's artist, Laura Anderson, is consistently adding new art pieces to our portfolio, whether it's through a commissioned piece or a new style. Every single art piece has meaning, whether inspired by a dream, a deep thought, or a personal experience. Every art piece is created with enough emotion to captivate the onlooker and hold their gaze for hours, pulling inner feelings of positivity, enlightenment, and bliss. We say, don't stand in the way of the light, and let the true meaning of art inspire you.



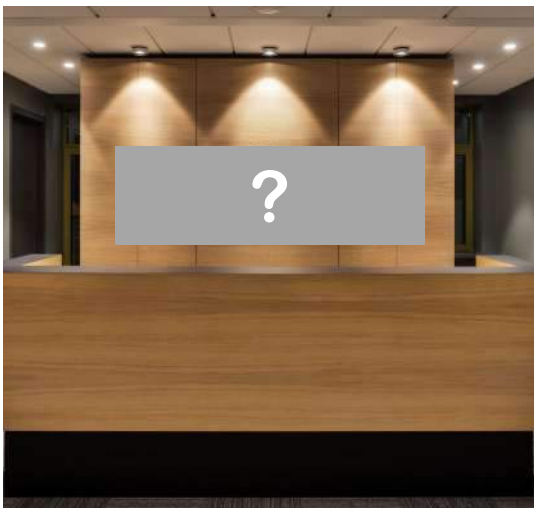
What we offer

| | |
|-----------------------------------|----|
| Original Art Pieces | 22 |
| Commissioned Art | 22 |
| Canvas Art Prints | 23 |
| Multi Paneled Canvas Prints | 23 |
| Metal Art Prints | 24 |
| Outdoor Metal Art Prints | 24 |
| Custom Framed Prints | 25 |
| Wood Prints | 26 |
| Acrylic Prints | 27 |



ORIGINAL ART

An original art piece already created with emotion and meaning to pull inner feelings of positivity, enlightenment, and bliss.



COMMISSIONED ART

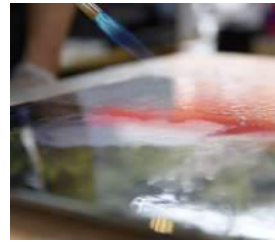
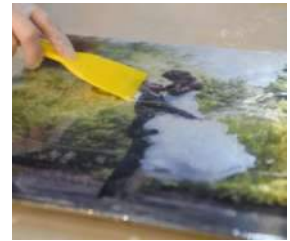
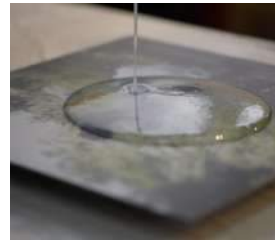
Have a vision in mind? If our art matches your style, we can work with you to create a custom 'one of a kind' piece for your location.



CANVAS PRINTS

Our canvas is designed to meet art galleries' and museum's longevity requirements and ensure consistency of shades for up to 200 years old. The printing process is Giclee with Pigment Ink on a Premium Fine Art Matte Canvas 410g/m².

- Canvas Roll
- Stretched Canvas
- Floating Framed Canvas
- Silvery (Metallic) Canvas
- Multiple Varnish's Available
- Multi Panel
- **Multi Paneled Canvas**
 - 5 Panels
 - 4 Panels
 - 3 Panels
 - Parallel, Cube, Cross



METAL PRINTS

BRUSHED ALUMINUM PRINT: Created using high quality aluminum panels, our metal prints are strong, durable and weatherproof - perfect for outdoor areas. UV Cured, meaning ink is resistant to sun & humidity. Comes ready to hang, with various mounting options, sizes and shapes.

HD METAL PRINT: Made with ChromaLuxe panels, the world's leading manufacturer of high-definition sublimatable photo panels. The combination of unmatched color brilliance, superior durability and true generational archival qualities makes ChromaLuxe the perfect choice for image reproduction and the ideal choice for professional photo printing. ChromaLuxe metal prints are the perfect High-Definition medium for displaying artwork and photography. These prints will transform home or commercial interiors into world-class design experiences.

EPOXY METAL PRINT: We provide a unique combination of brushed metal look with a thick, glossy topcoat that graces the surface of your image for that gorgeous modern look



FRAMED PRINTS

Fine art giclee printing with quality selection of personalized picture frames for all occasions. With our assortment of sophisticated designs you can create an artful arrangement on a wall.

FRAME SELECTION

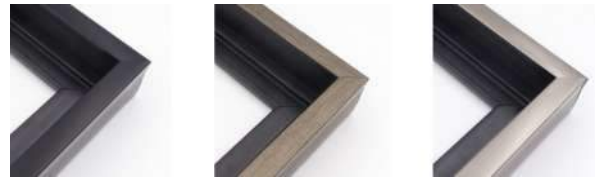
- Contemporary
- Traditional
- Rustic
- Ornate



WOOD PRINTS

Printed with UV cured inks providing an incredible high quality printed image which is scratch resistant with colors that will not fade overtime. White and lighter areas are not printed on the wood, revealing the beauty of the wood's texture and natural beauty! Printed on 3/8" (9mm) thick and strong and durable Russian Birch wood which is ready to hang and enjoy!

- **WOOD SPECIFICATIONS:** 3/8 inch (9mm) Thickness - Russian Birch Russian Birch is a multi-layer plywood which is sometimes also called Baltic Birch. It includes more sheets (or layers) and it is also thinner than traditional plywood. The multi-layer plywood is made entirely of hardwood. These quality manufacturing characteristics give it strong rigidity and excellent stability for being hung on walls. Russian Birch is a material most appropriate to producing furniture, shelves, jigs, and all kinds of items that require intensive use. Russian Birch plywood is therefore of superior quality and is much more rigid than traditional plywood which is usually composed of softwood leaves (such as spruce, poplar, pine or fir).



ACRYLIC PRINTS

Transform your artwork into stunning masterpieces with our Premium polished acrylic. The combination of super-vivid printing, professional-quality materials, and the depth and details of your photo creates an astonishing effect

- Acrylic Thickness
 - 1/8" Light & Economical
 - 3/16" Greater Optical Depth
- No boarder or 2" transparent boarder
- Mounting options
 - Black Float Mount w/ wire
 - Framed w/ wire
 - 4 Standoff Metal Pieces
 - Elite Moulding
- Shape
 - Square Corner
 - Rounded Corners
 - Circle Cut
- Ready to hang

Available Original Pieces

Encaustic

| | | | |
|-----------|-----------|---------|------------|
| Awakening | 24" X 24" | \$2,700 | PG 5 [1.1] |
| Journey | 24" X 24" | \$2,700 | PG 6 [1.6] |
| Shine | 36" X 36" | \$3,500 | PG 7 [1.9] |

Mixed Media

| | | | |
|--------|-----------|---------|-------------|
| Luna | 60" X 48" | \$9,750 | PG 9 [2.3] |
| Energy | 16" X 40" | \$8,950 | PG 10 [2.6] |
| David | 16" X 41" | \$3,200 | PG 11 [2.7] |

Sculptured Patina

| | | | |
|-------------------------|-----------|---------|-------------|
| Essence of Woman | 12" X 28" | \$3,900 | PG 14 [3.2] |
| Essence of Man | 12" X 28" | \$3,900 | PG 14 [3.3] |
| Evoke | 30" X 40" | \$2,700 | PG 12 [2.8] |
| Emotion | 12" X 12" | \$475 | PG 14 [3.4] |
| Rust Intention Circle | 35" | \$2,700 | PG 18 [3.8] |
| Patina Intention Circle | 35" | \$3,500 | PG 18 [3.9] |
| Silver Intention Circle | 24" | \$2,700 | PG 18 [4.0] |
| Bronze Intention Circle | 24" | \$3,500 | PG 19 [4.1] |
| Lily | 48" X 48" | Call | PG 15 [3.5] |
| Breathe | 48" X 48" | Call | PG 15 [3.6] |
| Clarity | Call | Call | PG 15 [4.2] |

Cost of Prints

| | |
|----------------|------------------|
| Canvas | \$50 - \$500 |
| Acrylic | \$75 - \$800 |
| Metal | \$50 - \$900 |
| Wood | \$70 - \$700 |
| Framed | Call for pricing |

*Pricing depends on size and substrate

About the Artist

Laura is a full-time artist under the beautiful San Diego sun. It only takes a single step towards her studio to feel the positive intentions, and joyful fulfillment that art brings her. A single piece of her art is able to capture emotions so grandeur in bliss and strength – it speaks directly to an onlooker. Her pieces are so captivating that there is a dire need to touch and feel the art to help the mind explain the unforeseeable emotions that are evoked. It feels good, plain and simple.

It is no wonder why flowers bloom wherever Laura steps because her art captivates and people smile. She exudes positivity and a pursuit for soulful fulfillment and happiness in her day-to-day life. Married for 30+ years, her husband and three children aspire to continually look at life as she does – it is a gift that is always given, zealously and generously. Now, she shares it with the world through the tools and mediums that have partnered with her talent and have become an extension of her soul. Mind, hand, and tool are one. That is why her art speaks volumes of heightened and uplifting emotions.

Not only is Laura's art inspired by the celebrations of life around her, but she is inspired by her life travels. After growing up on the countryside of Wales, and moving to the hustle and bustle of London she experienced two very different ways of life at an early age. Loving the cultural differences in the UK alone, she made it her mission to explore and travel more. Her travels included Africa, Europe, France, Budapest, Copenhagen, and Mombasa just to name a few. After each travel, Laura learned that there was a common emotion in each place: Love is the highest feeling and we can control our own happiness. It is not determined by our situations but it is determined by our nature and our outlook to seek more for ourselves. Life is magical and we have to make the best of it.



"My art is a dance in pursuit of perfection, strength, intention, acceptance and finality. I find that I am inspired by my life journeys, travels, my family and my dreams – it is whirlwind of everything my life celebrates, past, present and future."
- Laura Anderson

Get in touch with us!

Evoke Art Studio would love to hear from you if you feel our style fits your needs.

Direct Contact: Hudson Sherr
Hudson@EvokeArtStudio.com
858.231.6455

Location: San Diego, CA
www.EvokeArtStudio.com

Art Methods

Encaustic

Sculptured Patina

Mixed Media

"I want people to have a need to touch the art, as if it is speaking to them directly. So much of what is out there doesn't feel good and as much as there is bad in the world, we should all seek happiness and success. It is up to us to push and celebrate as much as we can. I want my art to inspire people to seek everything they want in life—I say, don't stand in the way of the light."

- Laura Anderson (Artist)

Encaustic

Encaustic – (Beeswax. Derma Resin. Pigment) This medium dates back to the Egyptian mummy portraits and in Greek means “to burn in”. It is composed of natural fragrant beeswax, and derma resin (also known as Malaysia tree sap). To create the art, I have to paint in layers, and after each layer I fuse it with a blowtorch until I receive the desired effect. I have as many as fifty layers to a single piece and in some cases, I will set parts of the encaustic on fire with shellac. After the layers are complete, I will buffer the encaustic with a non-lint, soft cloth it will reveal the saturated colors. In the end, it has a beautiful luster, strong pigment and looks as if it could be oil paint that is kept molten.

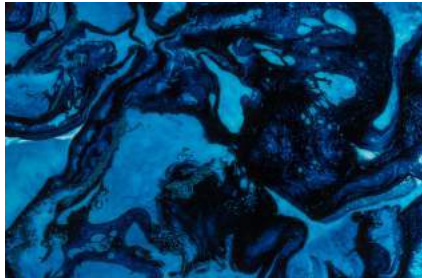


"Movement"
Prints Available

0.1



"Drift"
Prints Available
0.2

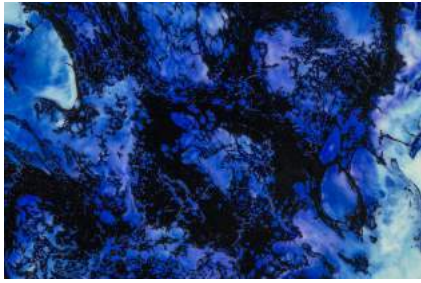


"Beneath"
Prints Available
0.3



"Above Ocean"
Prints Available
0.4





"Perspective"
Prints Available
0.5



"Looking Through"
Prints Available
0.6



"Zen Within"
Prints Available
0.7





"Nebula"
Prints Available
0.8



"Sand Bar"
Prints Available
0.9



"Two Worlds"
Prints Available
1.0





"Awakening"
Original & Prints Available
Dimensions: 24" X 24"
Weight: 6lbs
1.1



"Love Note"
Prints Available
1.2



"Secret Flower"
Prints Available
1.3





"Dry"
Prints Available
1.4



"Wandering"
Prints Available
1.5

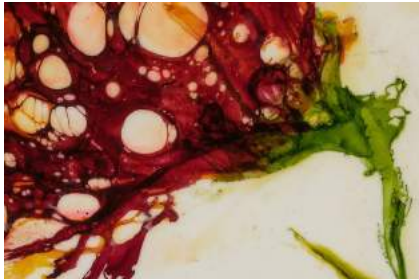


"Journey"
Original & Prints Available
Dimensions: 24" X 24"
Weight: 6lbs
1.6





"Romance"
Prints Available
1.7



"Luck"
Prints Available
1.8

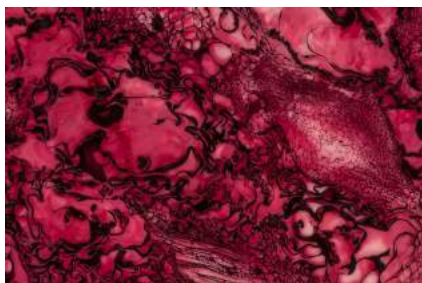


"Shine"
Original & Prints Available
Dimensions: 36" X 36"
Weight: 11.2lbs
1.9





"Charm"
Prints Available
2.0



"Aroma"
Prints Available
2.1



Have your own style and color in mind?
Reach out to us! We are happy to commission an art piece for you.

Mixed Media

In any given art piece, I use one to four mediums, including: sculptured patina, encaustic, marble dust and limestone.



"Luna"

Original & Prints Available

Dimensions 48" X 60"

Weight: Unknown

2.3



"Silver Moon"
Prints Available
2.4



"Ammonite"
Prints Available
2.5



"Energy"
Original & Prints Available
Dimensions: 16" X 40"
Weight: Unknown
2.6





"David"
Original & Prints Available
Dimensions: 41" X 16"
weight: 12.2lbs
2.7



Have your own style and color in mind?
Reach out to us! We are happy to commission an art piece for you.

Sculptured Patina

Once sculpting and carving are complete Laura applies up to eight layers of liquid metal that are mixed with a hardener and catalyst. She could wait 5 to 100 years to let a patina naturally occur or bury my piece in the ground but with magical chemicals she creates a controlled patina. Laura can also stop the patina once she achieves the desired effect. This process alone can take as little as a few hours or as much as a few days or even weeks to achieve. It is a wonderful process because as much as she can control the amount of patina added to any given piece, it still has a life of its own, thus making each piece unique. It is magical!



"Evoke"

Original & Prints Available

Dimensions: 30" X 40"

Weight: Unknown

2.8



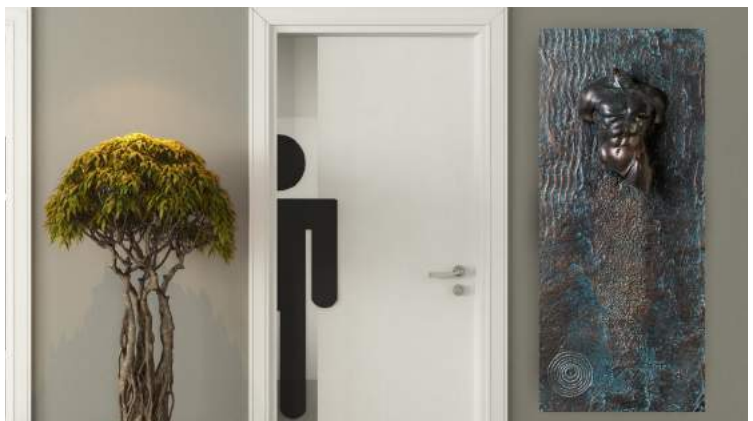
"Guardian"
Prints Available
2.9



"Soul of Woman"
Prints Available
3.0

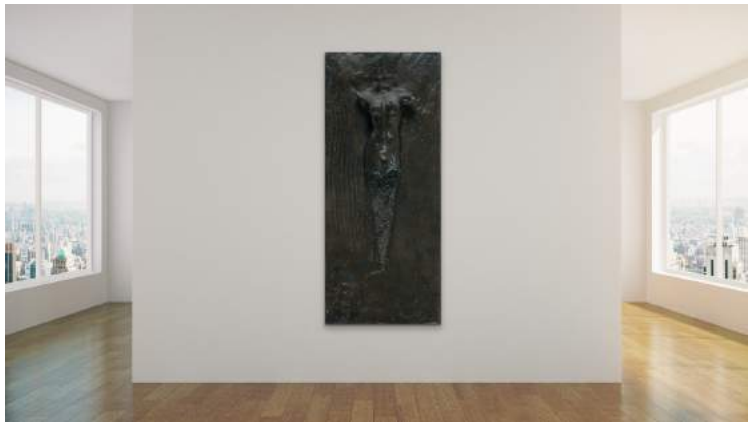


"Soul of Man"
Prints Available
3.1

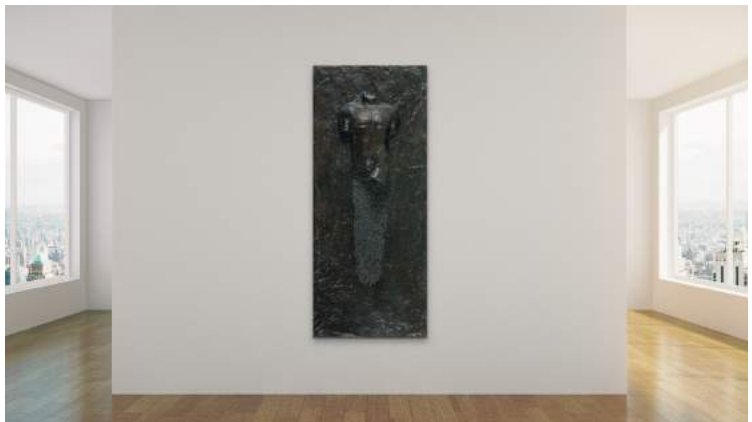




"Essence of Woman"
Original & Prints Available
Dimensions: 28" X 12"
Weight: 9lbs
3.2



"Essence of Man"
Original & Prints Available
Dimensions: 28" X 12"
Weight: 10lbs
3.3



"Emotion"
Original & Prints Available
Dimensions: 12" X 12"
Weight: 4.4lbs
3.4





"Lily"

Original & Prints Available

Dimensions: 48" X 48"

weight: Unknown

3.5



"Breathe"

Original & Prints Available

Dimensions: 48" X 48"

Weight: Unknown

3.6



"Clarity"

Original & Prints Available

Dimensions: Unknown

Weight: Unknown:

4.2



Have your own style and color in mind?

Reach out to us! We are happy to commission an art piece for you.



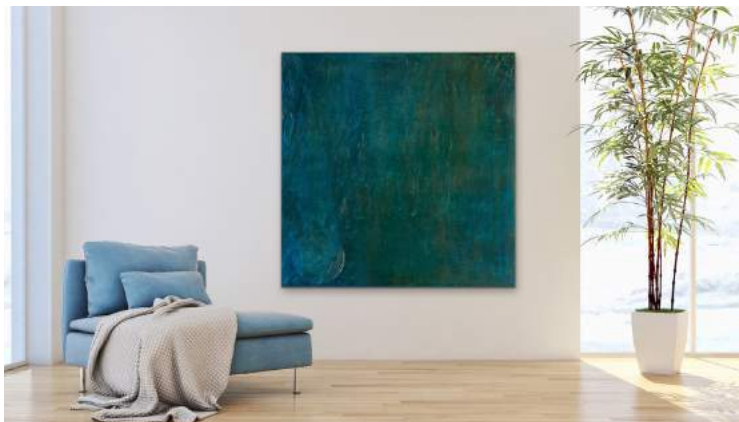
"Lily"

Original & Prints Available

Dimensions: 48" X 48"

weight: Unknown

3.5



Have your own style and color in mind?

Reach out to us! We are happy to commission an art piece for you.

Intention Circle

*Sculptured Patina Special Collection

It started as a dream that evoked an emotion of depth and meaning; it was clear that I needed to create it. The “it” being what I now call an Intention Circle. The circle is meant to mirror and evoke emotions for the onlooker that is essential to understanding oneself. Its intention is to bring positive energy and reunite your physical being to your spiritual one through the conscious and subconscious. It is an intention circle and is meant to be infinite in its depth of emotion and perception.

It is your circle, your path, and your life's intention. It pushes for self honesty and helps to visualize how far you may have strayed from your unrealized dreams. It will give you balance and strength to find what is missing and thus, will help to restore your joys in life through self-understanding.

Each circular layer represents something different and meaningful to the inner you.

- **Smallest Circle** – Self/Soul. This is you, yourself and your soul. This represents who you are and who you’ve become in your life and your families lives.
- **Medium Circle** – Gratitude. Gratitude, gratitude. This represents thankfulness for life and all that is good; it is positivity.
- **Largest Circle** – Intention. Intention. This is all the good that we want to intend for ourselves our family, and the world. This is where you order from the infinite universe anything that you would like; joy, happiness, success, relationships, world piece, health, house, car, it is your intention and your permission to dream.



"Rust Intention Circle"
Original & Prints Available
Dimensions: 35"
Weight: 38.2lbs
3.8



"Patina Intention Circle"
Original & Prints Available
Dimensions: 35"
Weight: 37.2lbs
3.9



"Silver Intention Circle"
Original & Prints Available
Dimensions: 24"
Weight: 16lbs
4.0





"Bronze Intention Circle"
Original & Prints Available
Dimensions: 24"
Weight: 17.4lbs
4.1



Works in progress

Evoke Art Studio's artist, Laura Anderson, is consistently adding new art pieces to our portfolio, whether it's through a commissioned piece or a new style. Every single art piece has meaning, whether inspired by a dream, a deep thought, or a personal experience. Every art piece is created with enough emotion to captivate the onlooker and hold their gaze for hours, pulling inner feelings of positivity, enlightenment, and bliss. We say, don't stand in the way of the light, and let the true meaning of art inspire you.



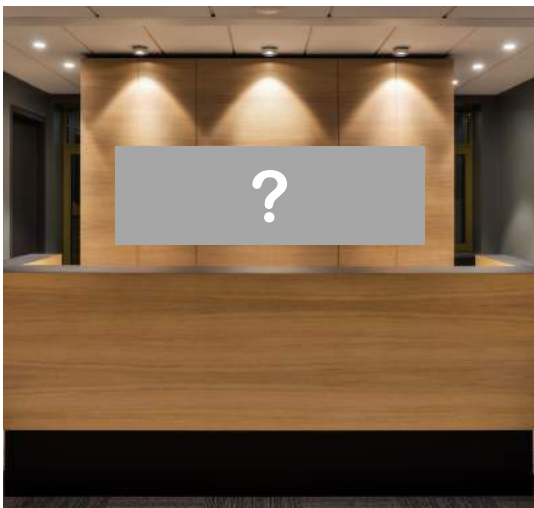
What we offer

| | |
|-----------------------------------|----|
| Original Art Pieces | 22 |
| Commissioned Art | 22 |
| Canvas Art Prints | 23 |
| Multi Paneled Canvas Prints | 23 |
| Metal Art Prints | 24 |
| Outdoor Metal Art Prints | 24 |
| Custom Framed Prints | 25 |
| Wood Prints | 26 |
| Acrylic Prints | 27 |



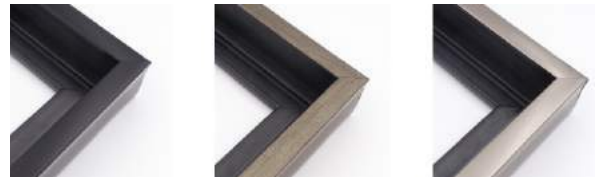
ORIGINAL ART

An original art piece already created with emotion and meaning to pull inner feelings of positivity, enlightenment, and bliss.



COMMISSIONED ART

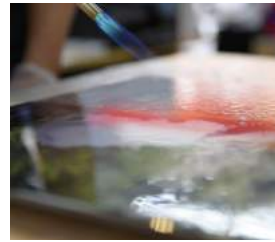
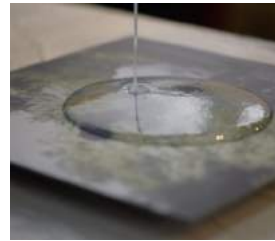
Have a vision in mind? If our art matches your style, we can work with you to create a custom 'one of a kind' piece for your location.



CANVAS PRINTS

Our canvas is designed to meet art galleries' and museum's longevity requirements and ensure consistency of shades for up to 200 years old. The printing process is Giclee with Pigment Ink on a Premium Fine Art Matte Canvas 410g/m2.

- Canvas Roll
- Stretched Canvas
- Floating Framed Canvas
- Silvery (Metallic) Canvas
- Multiple Varnish's Available
- Multi Panel
- **Multi Paneled Canvas**
 - 5 Panels
 - 4 Panels
 - 3 Panels
 - Parallel, Cube, Cross



METAL PRINTS

BRUSHED ALUMINUM PRINT: Created using high quality aluminum panels, our metal prints are strong, durable and weatherproof - perfect for outdoor areas. UV Cured, meaning ink is resistant to sun & humidity. Comes ready to hang, with various mounting options, sizes and shapes.

HD METAL PRINT: Made with ChromaLuxe panels, the world's leading manufacturer of high-definition sublimatable photo panels. The combination of unmatched color brilliance, superior durability and true generational archival qualities makes ChromaLuxe the perfect choice for image reproduction and the ideal choice for professional photo printing. ChromaLuxe metal prints are the perfect High-Definition medium for displaying artwork and photography. These prints will transform home or commercial interiors into world-class design experiences.

EPOXY METAL PRINT: We provide a unique combination of brushed metal look with a thick, glossy topcoat that graces the surface of your image for that gorgeous modern look



FRAMED PRINTS

Fine art giclee printing with quality selection of personalized picture frames for all occasions. With our assortment of sophisticated designs you can create an artful arrangement on a wall.

FRAME SELECTION

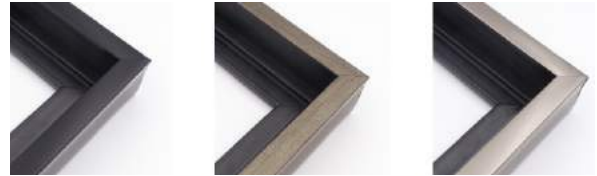
- Contemporary
- Traditional
- Rustic
- Ornate



WOOD PRINTS

Printed with UV cured inks providing an incredible high quality printed image which is scratch resistant with colors that will not fade overtime. White and lighter areas are not printed on the wood, revealing the beauty of the wood's texture and natural beauty! Printed on 3/8" (9mm) thick and strong and durable Russian Birch wood which is ready to hang and enjoy!

- **WOOD SPECIFICATIONS:** 3/8 inch (9mm) Thickness - Russian Birch Russian Birch is a multi-layer plywood which is sometimes also called Baltic Birch. It includes more sheets (or layers) and it is also thinner than traditional plywood. The multi-layer plywood is made entirely of hardwood. These quality manufacturing characteristics give it strong rigidity and excellent stability for being hung on walls. Russian Birch is a material most appropriate to producing furniture, shelves, jigs, and all kinds of items that require intensive use. Russian Birch plywood is therefore of superior quality and is much more rigid than traditional plywood which is usually composed of softwood leaves (such as spruce, poplar, pine or fir).



ACRYLIC PRINTS

Transform your artwork into stunning masterpieces with our Premium polished acrylic. The combination of super-vivid printing, professional-quality materials, and the depth and details of your photo creates an astonishing effect

- Acrylic Thickness
 - 1/8" Light & Economical
 - 3/16" Greater Optical Depth
- No boarder or 2" transparent boarder
- Mounting options
 - Black Float Mount w/ wire
 - Framed w/ wire
 - 4 Standoff Metal Pieces
 - Elite Moulding
- Shape
 - Square Corner
 - Rounded Corners
 - Circle Cut
- Ready to hang

Available Original Pieces

Encaustic

| | | | |
|-----------|-----------|---------|------------|
| Awakening | 24" X 24" | \$2,700 | PG 5 [1.1] |
| Journey | 24" X 24" | \$2,700 | PG 6 [1.6] |
| Shine | 36" X 36" | \$3,500 | PG 7 [1.9] |

Mixed Media

| | | | |
|--------|-----------|---------|-------------|
| Luna | 60" X 48" | \$9,750 | PG 9 [2.3] |
| Energy | 16" X 40" | \$8,950 | PG 10 [2.6] |
| David | 16" X 41" | \$3,200 | PG 11 [2.7] |

Sculptured Patina

| | | | |
|-------------------------|-----------|---------|-------------|
| Essence of Woman | 12" X 28" | \$3,900 | PG 14 [3.2] |
| Essence of Man | 12" X 28" | \$3,900 | PG 14 [3.3] |
| Evoke | 30" X 40" | \$2,700 | PG 12 [2.8] |
| Emotion | 12" X 12" | \$475 | PG 14 [3.4] |
| Rust Intention Circle | 35" | \$2,700 | PG 18 [3.8] |
| Patina Intention Circle | 35" | \$3,500 | PG 18 [3.9] |
| Silver Intention Circle | 24" | \$2,700 | PG 18 [4.0] |
| Bronze Intention Circle | 24" | \$3,500 | PG 19 [4.1] |
| Lily | 48" X 48" | Call | PG 15 [3.5] |
| Breathe | 48" X 48" | Call | PG 15 [3.6] |
| Clarity | Call | Call | PG 15 [4.2] |

Cost of Prints

| | |
|----------------|------------------|
| Canvas | \$50 - \$500 |
| Acrylic | \$75 - \$800 |
| Metal | \$50 - \$900 |
| Wood | \$70 - \$700 |
| Framed | Call for pricing |

*Pricing depends on size and substrate

About the Artist

Laura is a full-time artist under the beautiful San Diego sun. It only takes a single step towards her studio to feel the positive intentions, and joyful fulfillment that art brings her. A single piece of her art is able to capture emotions so grandeur in bliss and strength – it speaks directly to an onlooker. Her pieces are so captivating that there is a dire need to touch and feel the art to help the mind explain the unforeseeable emotions that are evoked. It feels good, plain and simple.

It is no wonder why flowers bloom wherever Laura steps because her art captivates and people smile. She exudes positivity and a pursuit for soulful fulfillment and happiness in her day-to-day life. Married for 30+ years, her husband and three children aspire to continually look at life as she does – it is a gift that is always given, zealously and generously. Now, she shares it with the world through the tools and mediums that have partnered with her talent and have become an extension of her soul. Mind, hand, and tool are one. That is why her art speaks volumes of heightened and uplifting emotions.

Not only is Laura's art inspired by the celebrations of life around her, but she is inspired by her life travels. After growing up on the countryside of Wales, and moving to the hustle and bustle of London she experienced two very different ways of life at an early age. Loving the cultural differences in the UK alone, she made it her mission to explore and travel more. Her travels included Africa, Europe, France, Budapest, Copenhagen, and Mombasa just to name a few. After each travel, Laura learned that there was a common emotion in each place: Love is the highest feeling and we can control our own happiness. It is not determined by our situations but it is determined by our nature and our outlook to seek more for ourselves. Life is magical and we have to make the best of it.



"My art is a dance in pursuit of perfection, strength, intention, acceptance and finality. I find that I am inspired by my life journeys, travels, my family and my dreams – it is whirlwind of everything my life celebrates, past, present and future."
- Laura Anderson

Get in touch with us!

Evoke Art Studio would love to hear from you if you feel our style fits your needs.

Direct Contact: Hudson Sherr
Hudson@EvokeArtStudio.com
858.231.6455

Location: San Diego, CA
www.EvokeArtStudio.com